

**B.Sc. IN LEATHER GOODS AND ACCESSORIES
DESIGN (BSCLGAD)**

Term-End Examination

June, 2016

00086

BFW-051 : GEOMETRIC CONSTRUCTION

Time : 3 hours

Maximum Marks : 70

Note : (i) *All questions of Section A are compulsory to answer.*

(ii) *Answer any four questions from Section B.*

(iii) *Answer any one question from Section C.*

SECTION A

1. Write short notes with illustrations : **5×4=20**

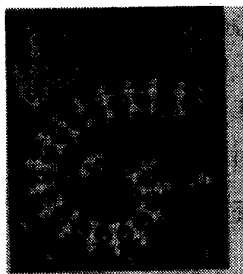
- (a) Line
- (b) Point
- (c) Circle
- (d) Angle
- (e) Polygon

2. Select the correct answer from the given four alternatives : **5×2=10**

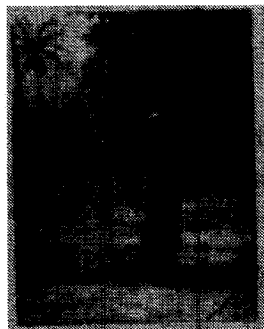
- (a) In a circle, how many centres are possible ?
- (i) 0
 - (ii) 1
 - (iii) 2
 - (iv) 3

(b) Golden Spiral is prominent in which of the following painting forms ?

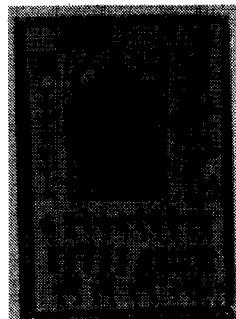
(i)



(ii)



(iii)

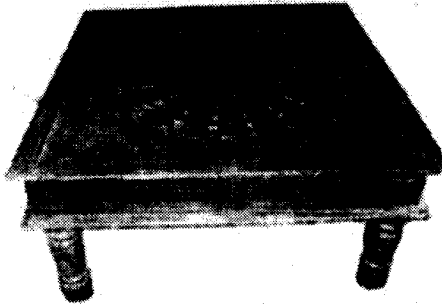


(iv)

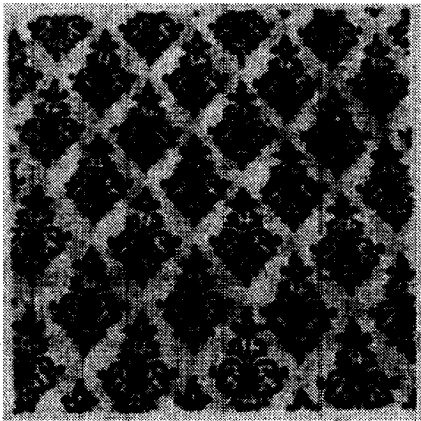


- (c) Uses of geometric principles are seen in which of the following examples ?

(i)



(ii)

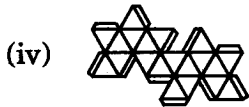
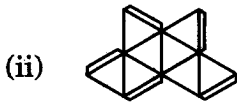
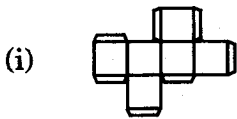


(iii)

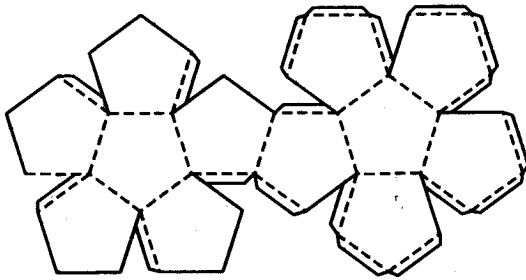


(iv) All are correct

(d) Which of the following platonic nets will construct an icosahedron ?



(e) Which of the following line qualities in the given net drawing is indicating “half cut”, while you perform paper sheet cutting exercise ?



- (i) All external solid lines
- (ii) All dotted internal lines
- (iii) Both are true
- (iv) All are incorrect

3. Identify the *True* and *False* statements : $5 \times 2 = 10$

- (a) Total number of platonic solids are 11.
- (b) Icosidodecahedron is possible to make in a classroom.
- (c) Archimedean solids were first conceptualized by geometric experts from Africa.
- (d) A line segment is a composition of points.
- (e) Plastic scales are more accurate than steel scales.

SECTION B

4. Why is a wooden scale not recommended to use in a geometry classroom ? 5
5. Write the names of all platonic solids. 5
6. Bisect a line segment of 8 cm. Line name is AB. 5
7. Draw a parallel line, by using arch method. Length of the base line XY is 10 cm and the space between both parallel lines should be 2 cm. 5
8. What do you understand by duals ? 5

SECTION C

9. What do you understand by tessellations ? Write about regular, semi-regular and demi-regular types and elaborate with illustrations. 10
10. Discuss Archimedean solids. 10
11. Differentiate between 2-D and 3-D geometry and elaborate with the help of suitable examples. 10
-