

BACHELOR OF ARCHITECTURE (BARCH)

Term-End Examination

June, 2013

00326

BAR-053 : ESTIMATING AND COSTING

Time : 3 hours

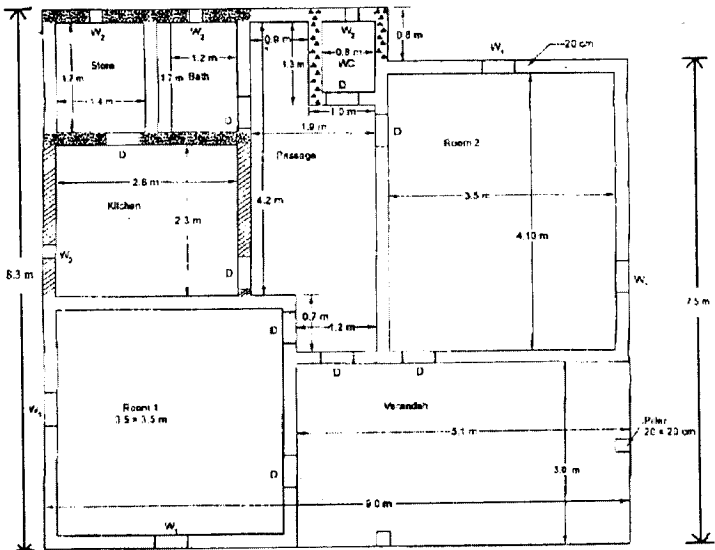
Maximum Marks : 70

Note : *Question number 1 is compulsory. Attempt any four questions from remainings. Use of calculator is permitted.*

1. (a) The estimation of earthwork for building is carried out under following condition (s) :
- (i) cutting 7x2=14
 - (ii) filling
 - (iii) partial cutting and filling
 - (iv) all of the above
- (b) Laitance is observed in concrete when :
- (i) it is too wet
 - (ii) it is overtemped
 - (iii) it is Over compacted
 - (iv) all of the above
- (c) Which of the following truss is preferred for the large span ?
- (i) Simple K truss
 - (ii) King post truss
 - (iii) Queen post truss
 - (iv) All of the above

- (d) The quantitative analysis of stone masonry is carried out in :
- (i) per m length
 - (ii) square meter of surface area
 - (iii) cubical meter
 - (iv) any one of the above
- (e) In percentage contract systems the charge for the supervision work (in the percentage of total cost) :
- (i) 5% to 10%
 - (ii) 10% to 15%
 - (iii) 15% to 20%
 - (iv) randomly
- (f) Arbitration is a process in which :
- (i) record of daily labour is maintained
 - (ii) record of material at site is maintained
 - (iii) the settlement of dispute is involved
 - (iv) none of the above
- (g) The centre of gravity of a semi circle (of radius r) from its diameter :
- (i) $\frac{2r}{3\pi}$
 - (ii) $\frac{4r}{3\pi}$
 - (iii) $\frac{2r}{\pi}$
 - (iv) $\frac{r}{\pi}$

2. Write down the rate analysis for following types of brick masonry : 2x7=14
- (a) 10 m³ first class brick work in kankar lime in foundations and plinth.
 - (b) 10 m³ first class brickwork in Jack arches in 1 : 3 cement and coarse sand mortar.
3. Compute the quantities of brick masonry work in super structure in 1 : 4 cm following specifications are applicable. 14
- (a) Height of main rooms from DPC upwards = 4.0 mt
 - (b) Height of verandah, passage, kitchen, store, bath and WC = 3.00 mt.



- (c) Thickness of walls above the plinth level = 20 cm
- (d) Sizes
 Doors, D - 1 × 2.1 mt
 Windows, W₁ - 2 × 1.5 mt (it is a double shutter window)
 W₂ - 1 × 1.5 mt (a single shutter window).
- (e) Thickness of RCC roof slab = 1.5 cm
 Thickness of lintels over doors and windows = 10 cm
 Bearing of lintels on either side = 10 cm
 Calculate the above masonry either by center line or by long and short wall methods.

4. Write short notes on the following : 2×7=14
- (a) Rate analysis of cement concrete work.
- (b) General specifications of cement concrete work.
5. Write a detailed note on methods of analysis of rates of different materials. 14
6. Use the following data and arrive at the rate of struck pointing with 1 : 2 cement - sand mortar on brickwork, including raking, watering, supply of materials, labour, tools and plants for 100 m² of work cost of cement = Rs. 200/- per bag cost of local sand = Rs. 75/- per m³. Assume the rate of labour. 14

7. Write short notes on any four :

4x3¹/₂=14

- (a) Schedule of quantities
 - (b) Types of tender
 - (c) Detailed specification of concrete
 - (d) Longwall and short wall method
 - (e) MAS account
 - (f) Methods of quantity surveying
-