

**MCA (Revised)**  
**Term-End Examination**  
**June, 2012**

**MCS-043 : ADVANCED DATABASE DESIGN**

*Time : 3 hours*

*Maximum Marks : 100*

*Note : Question number 1 is compulsory.*

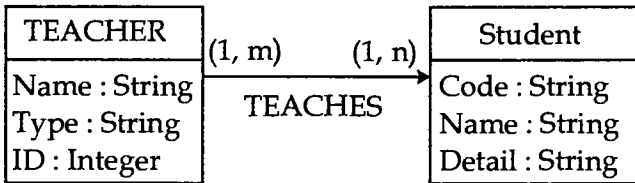
*Answer any three questions from the rest.*

1. (a) Is the following XML document well formed ? Justify your answer : 3
- ```

<?xml version = "1.0" standalone = "yes" ?>
<employee>
    <name>Amita</name>
    <department>English</ department>
</employee>
<employee>
    <name>Sumita</name>
    <department>Hindi</department>
</employee>

```
- (b) Determine all 4NF violations for the relation 6  
 schema R (X, Y, Z, W) with multivalued dependencies  $X \twoheadrightarrow Y$  and  $X \twoheadrightarrow Z$ .  
 Decompose the relation in to 4 NF.

- (c) What are triggers ? Explain the significance of triggers with the help of an example in SQL. 5
- (d) What is Data Warehousing ? Discuss various characteristics of Data Warehousing. 5
- (e) Create an object oriented database (using ODL) for the following class diagram, 5



- (f) Explain with the help of an example, the log based recovery scheme, using deferred database modification approach. 5
  - (g) Explain the role of query optimiser in oracle. 5
  - (h) Why do you need 3 Phase Commit (3PC) Protocol in case of distributed Databases ? Explain the 3PC protocol with the help of a diagram. 6
- 2.
- (a) What is multilevel security ? What are typical security levels ? 6
  - (b) How database Queries differ from data mining Queries ? Explain the K-means clustering in data mining algorithm with the help of an example. 7

- (c) Consider the following Query 7  
Select student\_id, student\_name, subject,  
marks  
From STUDENT, RESULT  
Where STUDENT. student\_id = RESULT.  
Student\_id  
And RESULT. marks > 60  
Create a Query evaluation plan for the above  
Query, assume suitable relations and  
statistics.
3. (a) What are multimedia databases ? Discuss 6  
the challenges in designing the multimedia  
databases.
- (b) "2 Phase locking protocol uses waiting, 6  
where as time stamping method uses Roll  
back of Transaction, to avoid non  
serializable execution". By considering the  
same transaction schedule, compare the  
above two execution strategies for  
concurrent transactions.
- (c) Consider the following relations : 8  
student (id, name, age, programme)  
fee-paid(id, date, amount)
- (i) Create a view using SQL for a student  
whose id is "001". The student is  
allowed to see information about  
himself/herself.
- (ii) The student has only read-access to  
his/her data. Write the appropriate  
SQL code for the above.

- (iii) Create another view for Administrator who can access and modify all the data.
4. (a) Consider a supply data of an organization having three dimensions as SUPPLIER, PART and PROJECT where a supplier "s" supplies part "p" to project "r" in quantity "q". Draw a star schema with SUPPLY as fact table. Make suitable assumptions. How does star schema differs from snow flake schema ? 8
- (b) With the help of a diagram, explain the reference architecture of Distributed DBMS. 6
- (c) List the characteristics and challenges in implementation of mobile databases. 6
5. (a) What are the different type of index implementations available in POST gre SQL ? Explain each one of them. 6
- (b) Explain the following : 8
- (i) Dynamic SQL
- (ii) OLAP and its types
- (iii) Spatial databases
- (iv) Semantic databases
- (c) What is the significance of creating Data Dictionary in DBMS ? Explain the statistics stored in the Data Dictionary, with the help of an example. 6